



<https://uni-luce.com>

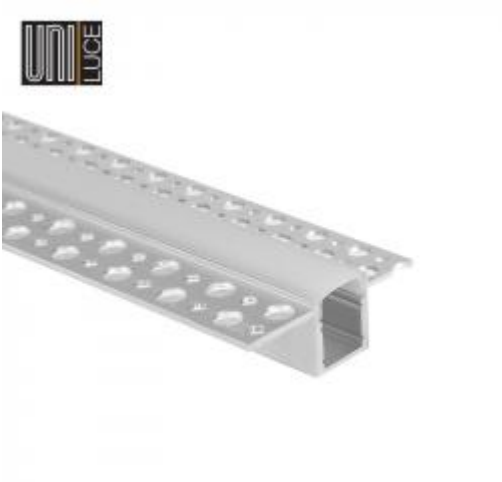
+39 339 505 5880

info@uni-luce.com

Via Monselice, 26, 20832 Desio

MB, Italy

AL PROFILE GYPS UNI-G-16,9x15,4



Available colors:

○ UNI-G-16,9x15,4-W

● UNI-G-16,9x15,4-B

○ UNI-G-16,9x15,4-S

Beam angle:

0°

Material:

aluminium

Location:

Interior

Product dimension:

16,9 x 15,4mm

Surface processing:

Anodizing

Diffuser transmittance:

85%

