



<https://uni-luce.com>

+39 339 505 5880

info@uni-luce.com

Via Monselice, 26, 20832 Desio

MB, Italy

NAUTILUS S+ SQ



○ 433-W9SQ

● 433-B9SQ

○ 433-WB9SQ

◐ 433-BG9SQ

Available colors:

Beam angle:

48° 34°

LED Color:

2700K 3000K 4000K

LED power:

7,5W

System Power:

8,9W 500lm

CRI:

80

Lumen output:

1135lm

Location:

Interior

Fixation:

Ceiling

Installation:

Surface

Product dimension:

94x94x94mm

Input:

220-240V 50\60Hz

IP:

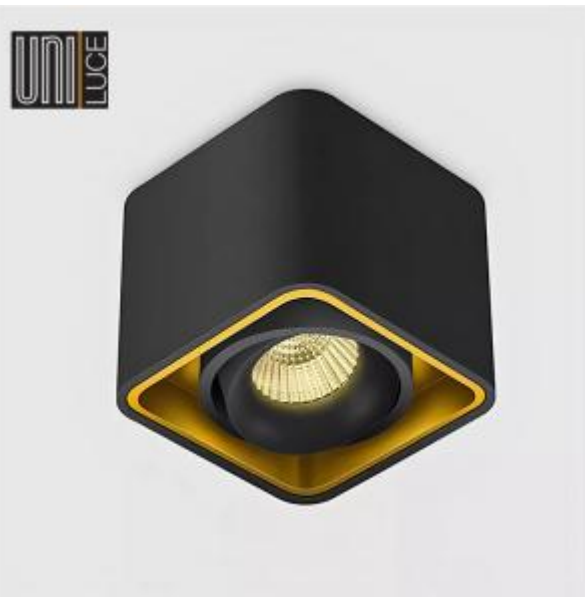
20

Class:

I

DIM Option:

ON/OFF TRIAC





<https://uni-luce.com>

+39 339 505 5880

info@uni-luce.com

Via Monselice, 26, 20832 Desio

MB, Italy

The NAUTILUS principle equals modularity and flexibility at its best, it grants the opportunity to the lighting designer to use his creativity: combine single and double units, choose either round or square shape, use multiple beam angles or play with colours. Dividing a luminaire into multiple modular parts not only creates uniformity within one family, it also facilitates the installation by giving the opportunity to the installer to place the frame in advance. No need to worry for the lighting modules in further finishing of the room, as the modules can be clicked into the frame afterwards