



<https://uni-luce.com>
+39 339 505 5880
info@uni-luce.com

Via Monselice, 26, 20832 Desio
MB, Italy

SIGMA C TRACK 1/4 CON D1000



Available colors:

○ 20996W-D1000

● 20996B-D1000

Beam angle:

/°

Material:

aluminium

Location:

Interior

Fixation:

Celling

Installation:

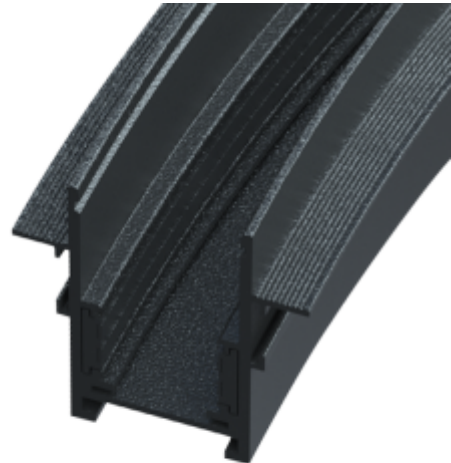
Track

Product dimension:

Ø1000*H48*T2.0mm

Input:

48V DC





<https://uni-luce.com>

+39 339 505 5880

info@uni-luce.com

Via Monselice, 26, 20832 Desio

MB, Italy

The SIGMA system is a compact low voltage (48V) track system in which LED lighting fixtures are mounted. It has no limitations in terms of length and allows create configurations from the ceiling to the walls making unexpected shapes and configuration from straight to curcles and semi-curcles. SIGMA track has different installation methods including recessed, surface mounting and suspending. Recessed track has 2 installation possibilities: before and after ceiling mount. In the SIGMA lighting system, you can easily change the number of lighting fixtures and their arrangements, creating new lighting patterns in the room. Thanks to great verietiy of lamps, SIGMA system can match any interior style. A special click mechanism ensures reliable fixation of the lighting fixtures in the track. Brightness adjustment, management via the DALI protocol, or 1-10V. Turnable white function is available for choice as well.