

lumiosa

THE DIRECTION OF THE HEART IT'S THE FUTURE

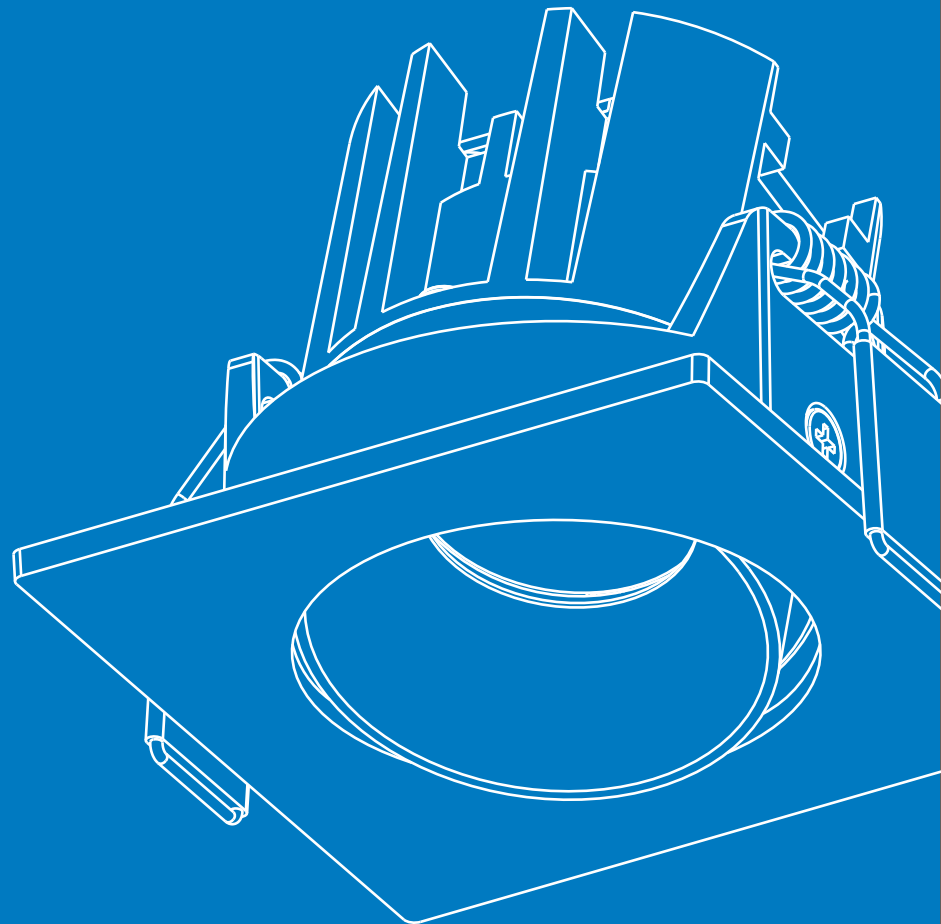
Professional LED Lighting Solution

Version No:L202201

INDOOR LIGHTING

DOT S AD SQ

TECHNICAL INFO



5Year
GUARANTEE

product information

Manufacturer LUMIOSA

Series DOT S AD SQ

Technical general

System power 7.8W

Flux 491Lm (3000K)

Beam angle 15°/24°/36°

Material Aluminum

Appearance color White+Black

Dimension 65×65×H50mm

Embedding depth 65mm

Cut hole size Ø55mm

Adjustable angle ±40°

IP Rate IP20

Input voltage AC220-240V/50-60Hz

Electrical level Class II

Light source parameters

Brand Luminus

Type COB

Power 6.48W

Input Current 180mA

Color temperature 2700K/3000K/3500K/4000K/5000K

CRI Ra > 90

Driver

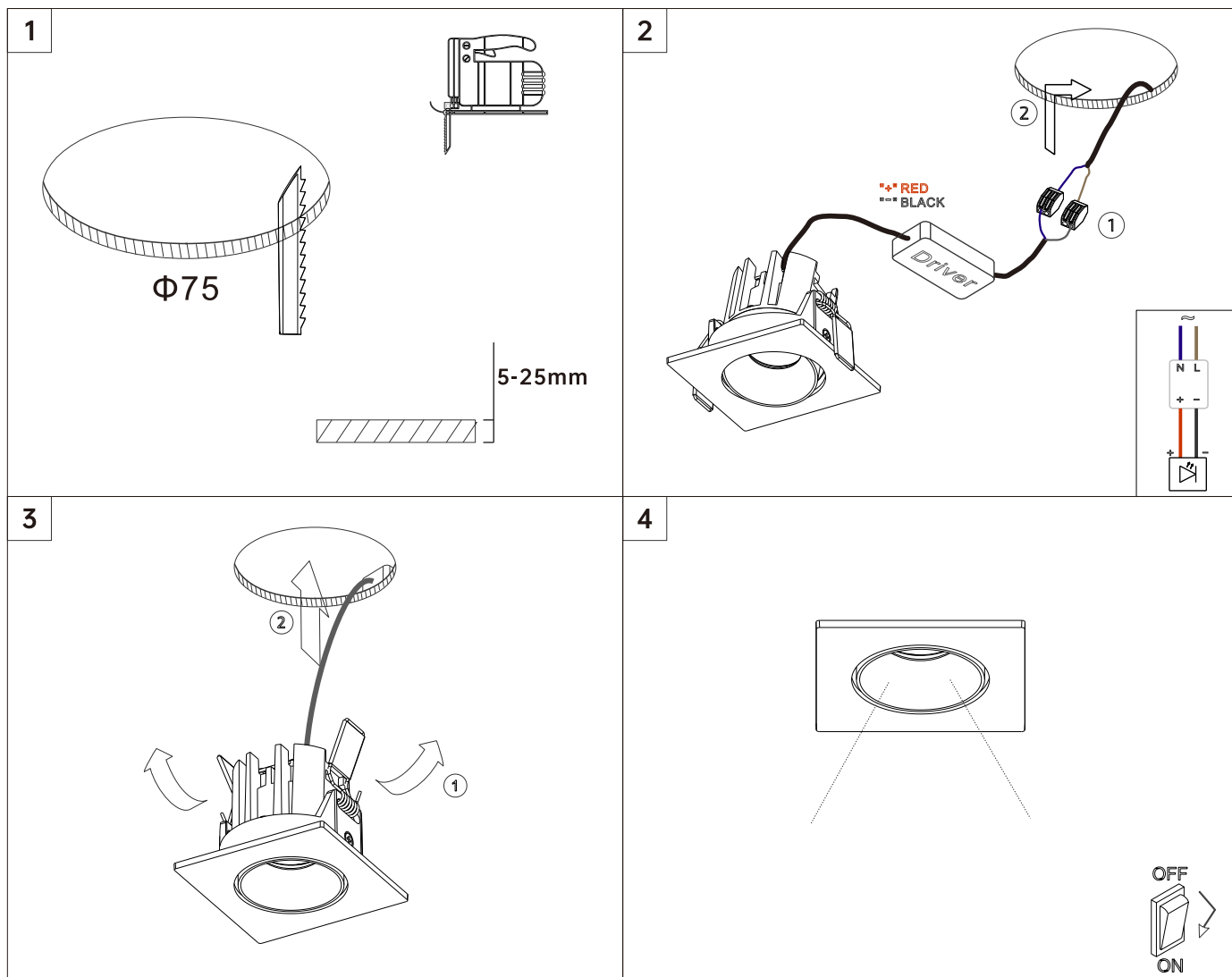
Options ON/OFF | TRIAC DIMMING | 0/1-10V | DALI



Product drawing



Instructions



lumiosa



Technical info

Version No:L202201